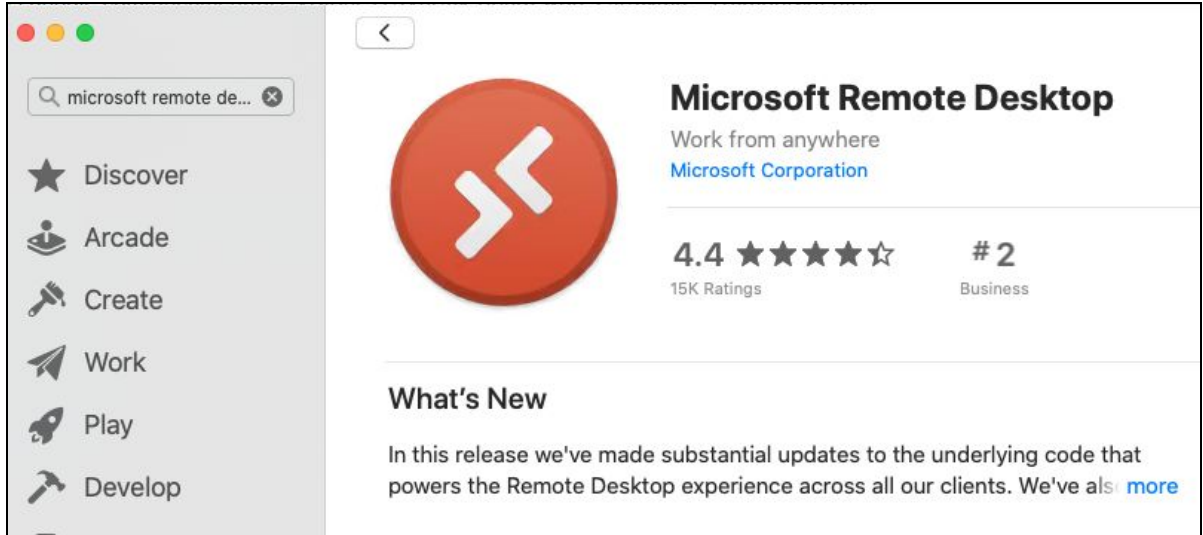








How To Remotely Access Computer Labs from Mac OS

1. Connect to SDSU VPN (Virtual Private Network). If you need assistance setting up your VPN connection, review the information on the [VPN Services webpage](#).
2. Launch **Applications > App Store**.
 - a. Search and download [Microsoft Remote Desktop](#).



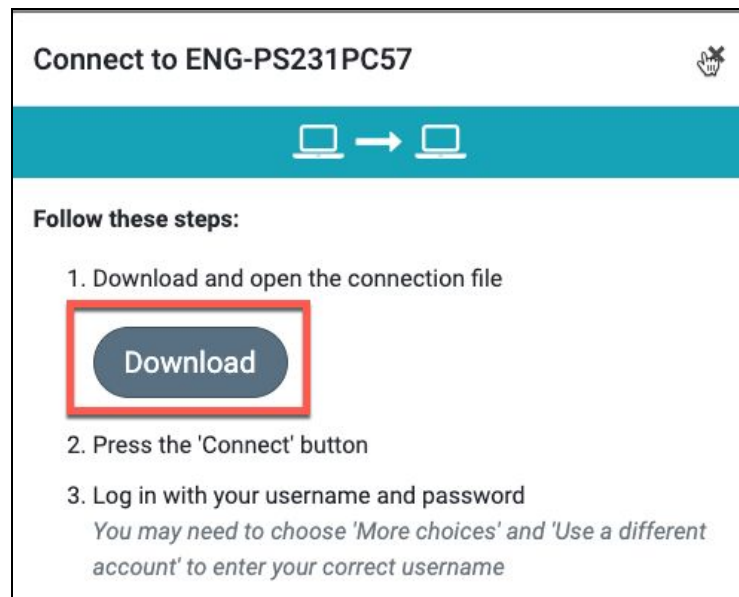
3. Visit the [SDSU Remote Labs webpage](#).
4. Select the lab you would like to connect to under "Computer Labs" in the left column.

Computer Labs	College of Engineering - E-221
Biology - LSN-126	13 computers available
Chemistry - GMCS-245	 ENG-E221PC02 ENG-E221PC02.id.sdsu.edu Connect
College of Engineering - E-207	 ENG-E221PC65 ENG-E221PC65.id.sdsu.edu Connect
College of Engineering - E-217	 ENG-E221PC61 ENG-E221PC61.id.sdsu.edu Connect
College of Engineering - E-221	 ENG-E221PC70 ENG-E221PC70.id.sdsu.edu Connect
College of Engineering - PS-231	 ENG-E221PC67 ENG-E221PC67.id.sdsu.edu Connect
College of Professional Studies & Fine Arts	 ENG-E221PC60 ENG-E221PC60.id.sdsu.edu Connect
Computer Science - GMCS-425	
Fowler College of Business	
Geology - CSL-427	
Geology - GMCS-244	
LARC	

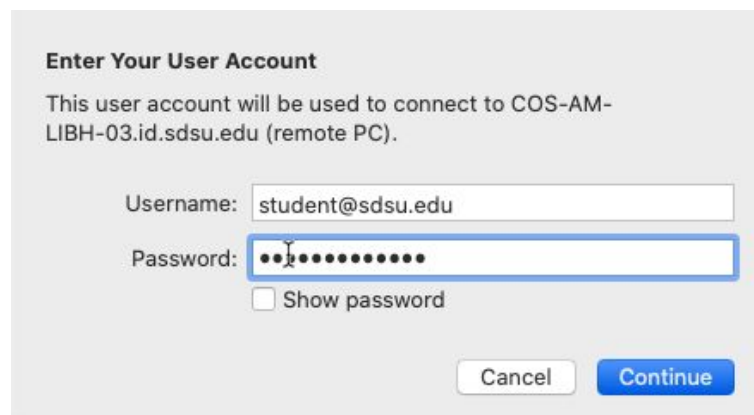
5. Click the "Connect" button for any available computer in your selected lab.

How To Remotely Access Computer Labs from Mac OS

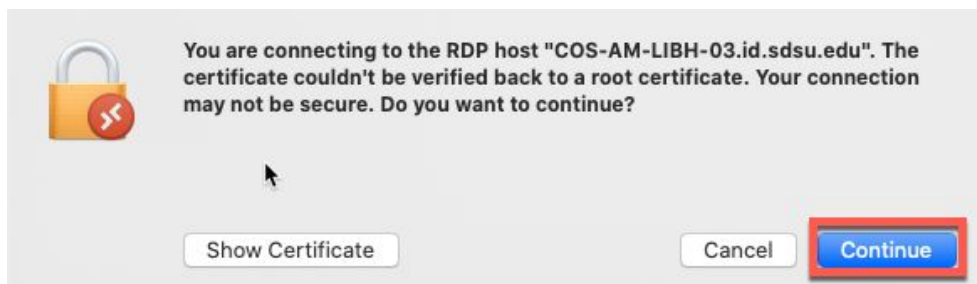
6. Click Download. When the file has finished downloading, double-click to open it.



7. Enter your SDSUid credentials to log in to the computer and click continue.



8. Click **Continue**



9. You are now connected remotely to the computer.
10. Please log off when you're done using the lab computer.